

1st, Ready for our programming cable



2nd, download the programming software driver

A screenshot of the QYT website's software download page. The browser address bar shows the URL 'http://qyt-cn.com/download1.html'. The website header includes the QYT logo and navigation links like 'About us', 'Products', 'News', 'Services', and 'Contact us'. A sidebar menu on the left is open, with 'Download' selected and 'Software' highlighted. The main content area lists various software drivers, with 'Program software driver' highlighted. Red arrows and labels '1st', '2nd', and '3rd' indicate the steps for downloading the software.

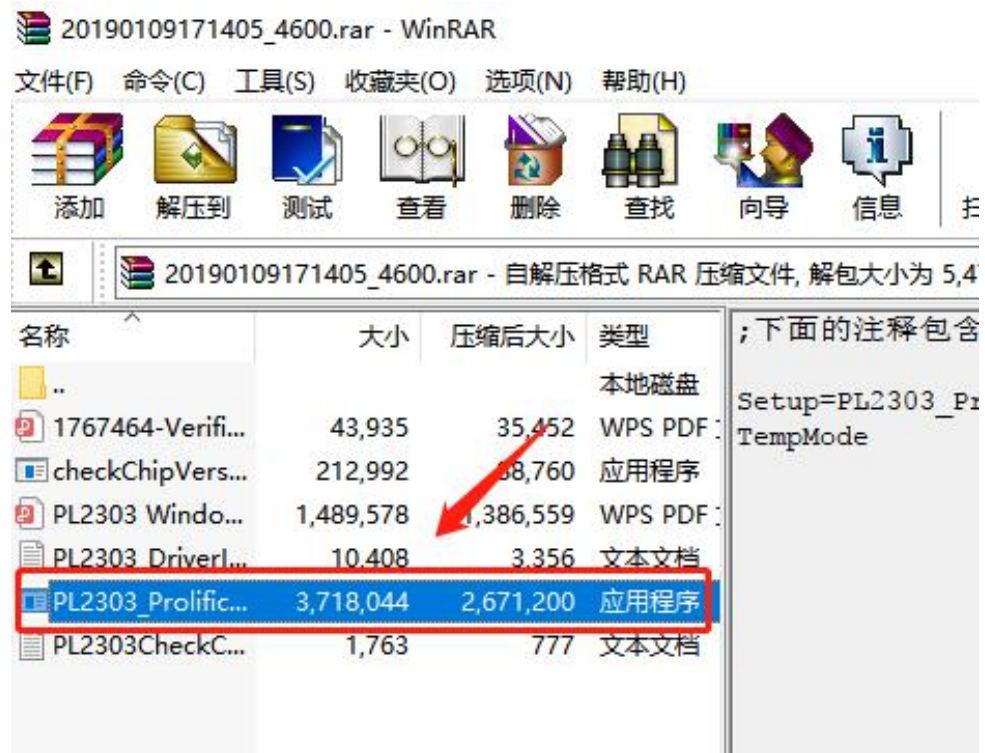
1st

2nd

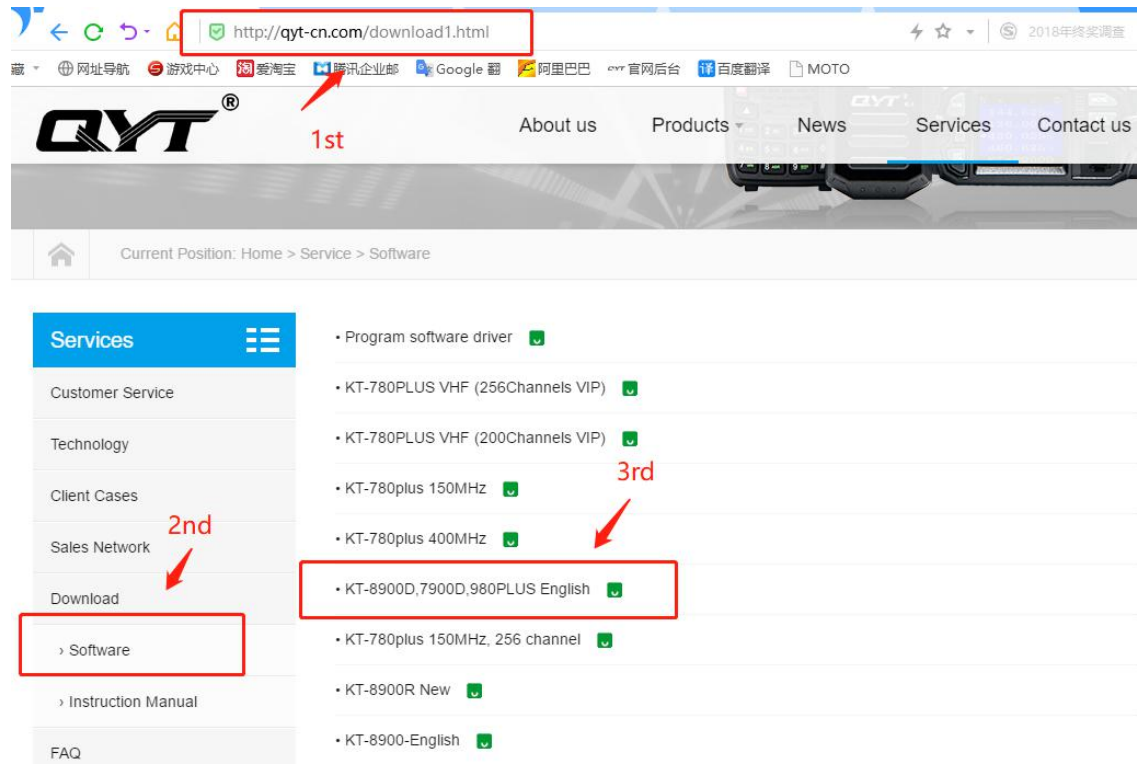
3rd

- Program software driver
- KT-780PLUS VHF (256Channels VIP)
- KT-780PLUS VHF (200Channels VIP)
- KT-780plus 150MHz
- KT-780plus 400MHz
- KT-8900D,7900D,980PLUS English
- KT-780plus 150MHz, 256 channel
- KT-8900R New
- KT-8900-English
- KT-8900R-English

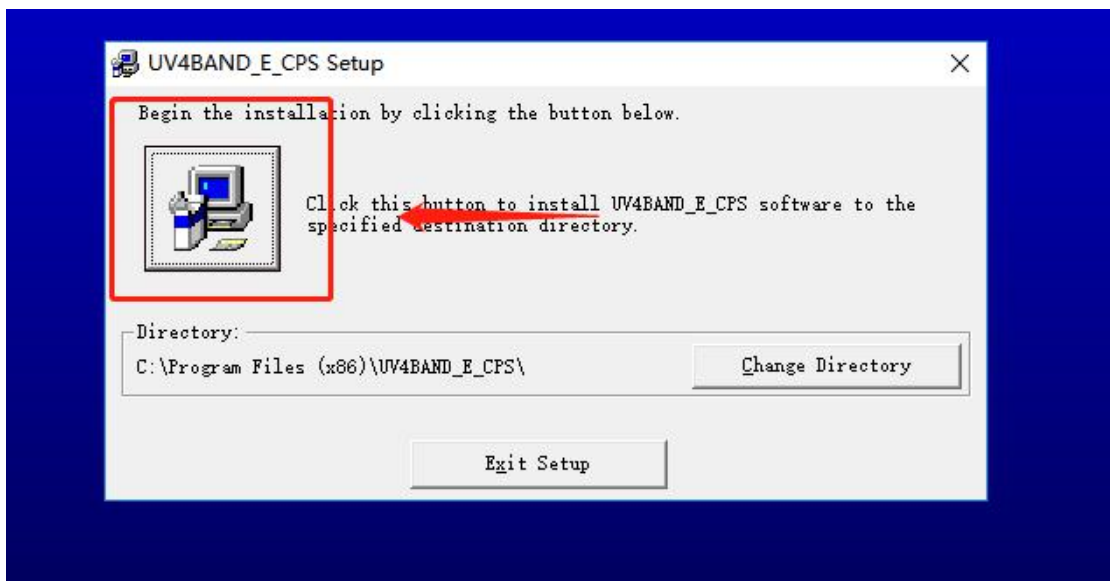
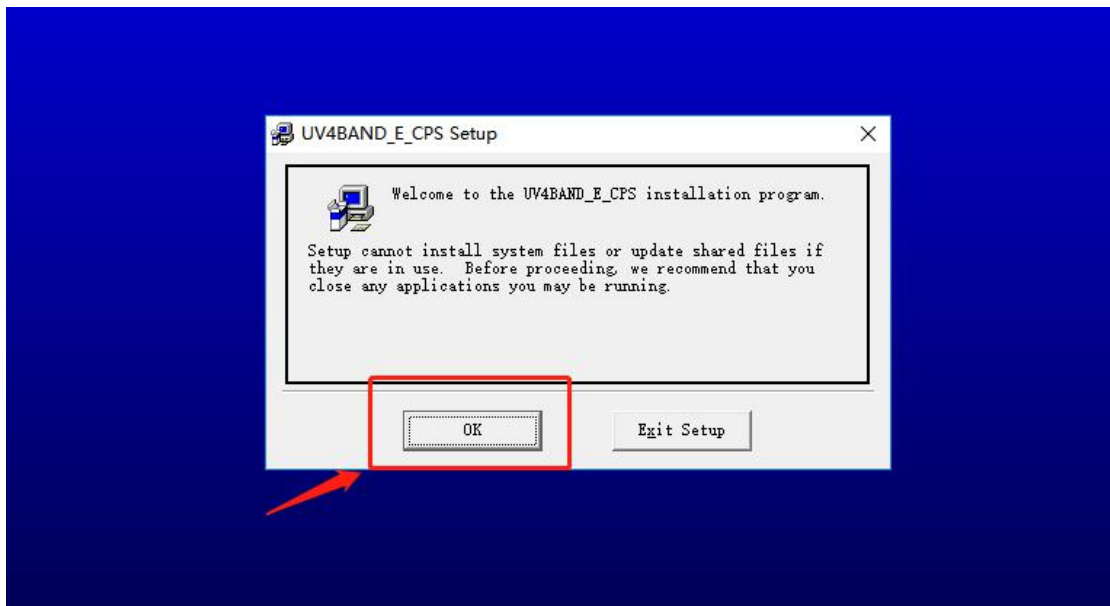
3rd, install the programming software driver

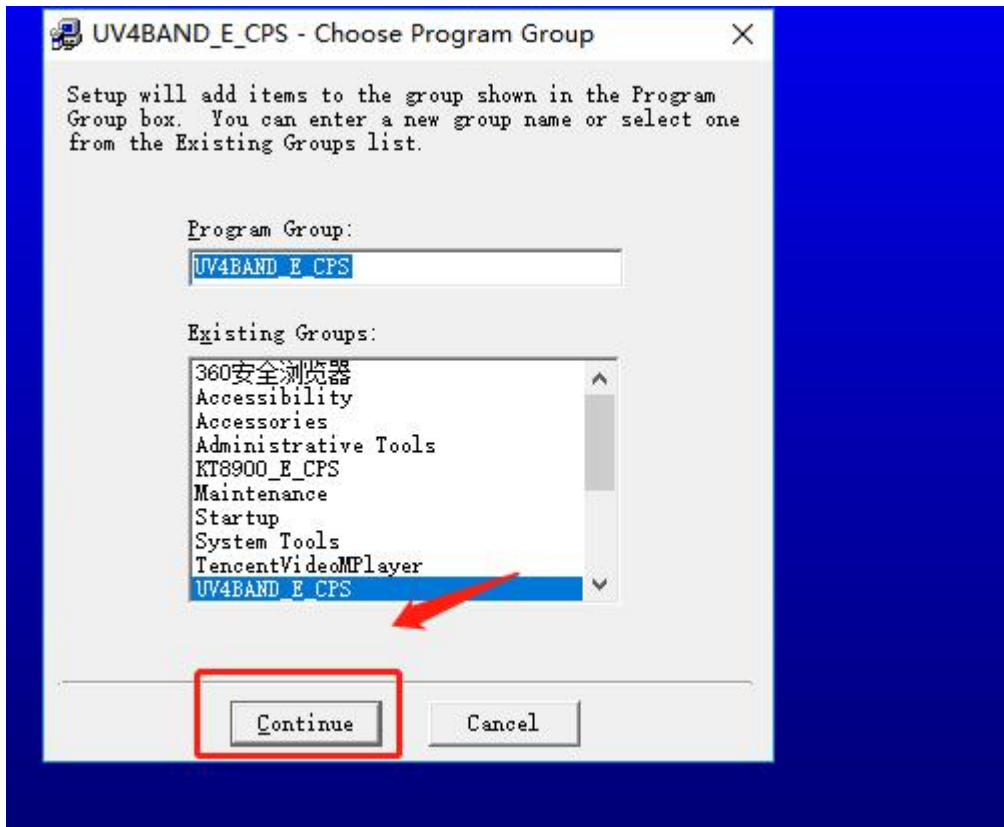


4th, download the KT-980PLUS programming software



## 5th, setup the programming software

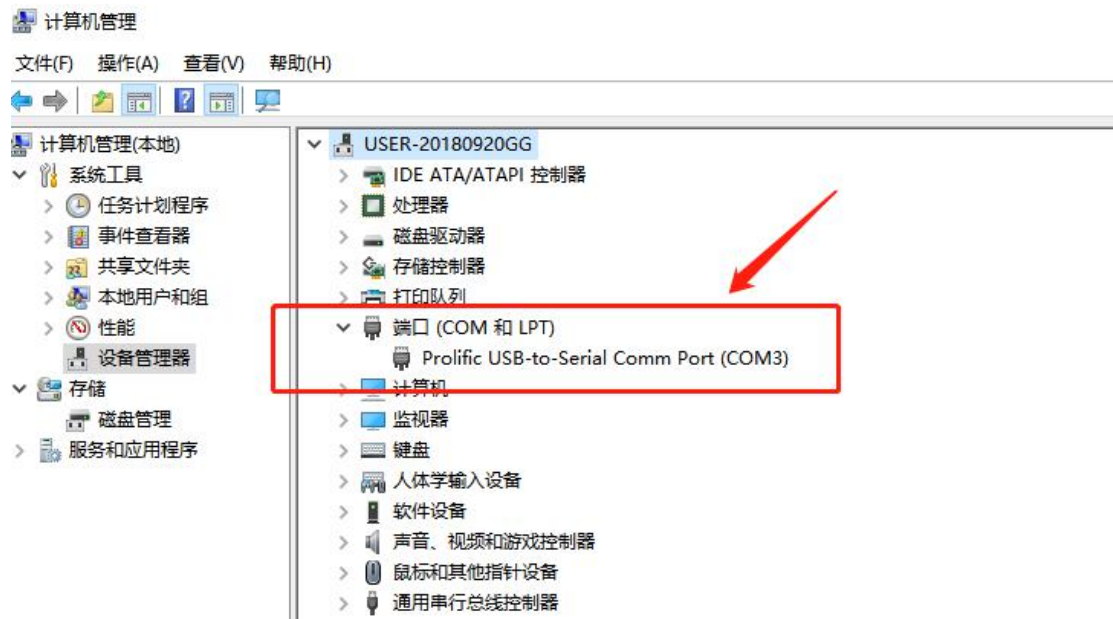




6th, connect the mobile radio and computer



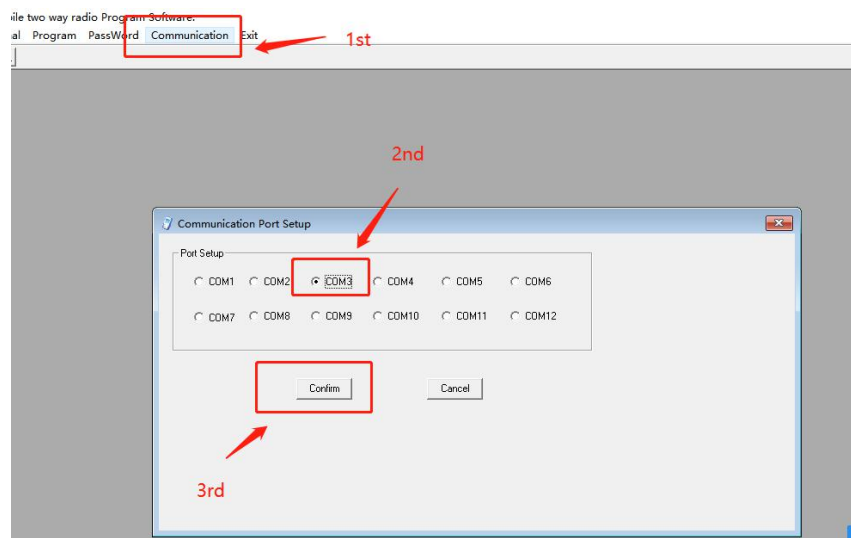
### 7th, find the Comm Port



### 8th, open the software



### 9th, choose the right interface



## 10th, programming the frequency

The screenshot shows a software window titled "Channel Information" with a table of channel parameters. The table has 15 columns: Channel, Band, RX Frequency, TX Frequency, CTCSS/DCS Dec, CTCSS/DCS Enc, TX Power, W/N, PTT-ID, BusyLock, Scan\_Add, SigCode, Dpisug, Spmute, SCR, and CH-Name. The first six rows (0-5) contain data for channels 0 through 5, while rows 7 through 25 are empty. Below the table is a control panel with buttons for Read, Write, Clear, Default, Save, Open, and Close, along with a Password field.

Channel	Band	RX Frequency	TX Frequency	CTCSS/DCS Dec	CTCSS/DCS Enc	TX Power	W/N	PTT-ID	BusyLock	Scan_Add	SigCode	Dpisug	Spmute	SCR	CH-Name
0	HF/UHf	155.02500	155.02500	67.0	67.0	HIGH	W	OFF	OFF	ON	1	OFF	QT	OFF	
1	HF/UHf	136.10000	136.10000	100.0	100.0	HIGH	W	OFF	OFF	ON	1	OFF	QT	OFF	
2	HF/UHf	173.95000	173.95000	127.3	127.3	HIGH	W	OFF	OFF	ON	1	OFF	QT	OFF	
3	HF/UHf	400.02500	400.02500	203.5	203.5	HIGH	W	OFF	OFF	ON	1	OFF	QT	OFF	
4	HF/UHf	479.95000	479.95000	OFF	OFF	HIGH	W	OFF	OFF	ON	1	OFF	QT	OFF	
5	HF/UHf	436.50000	436.50000	250.3	250.3	HIGH	W	OFF	OFF	ON	1	OFF	QT	OFF	
6	HF/UHf	155.50000	155.50000	D754I	D754I	HIGH	W	OFF	OFF	ON	1	OFF	QT	OFF	
7															
8															
9															
10															
11															
12															
13															
14															
15															
16															
17															
18															
19															
20															
21															
22															
23															
24															
25															

Read Write Clear Default Save Open Close Password